
Product Datasheet

Gelsolin Gsn Antibody (Monoclonal, GS-2C4) (orb18221)

Description

Gelsolin Gsn Antibody (Monoclonal, GS-2C4)

Species/Host

Mouse

Reactivity

Human, Rabbit

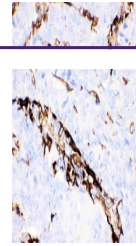
Conjugation

Unconjugated

Tested Applications

IHC, WB

Applications



IHC(P)
analysis of
Human
Lung
Cancer
Tis...

Immunogen

Human plasma gelsolin.

Form/Appearance

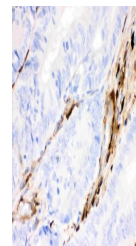
Lyophilized

Concentration

Adding 1 ml of PBS buffer will yield a concentration of 100 µg/ml.

Storage

Store at -20°C for one year from date of receipt. After reconstitution, at 4°C for one month. It can also be aliquotted and stored frozen at -20°C for six months. Avoid repeated freeze-thaw cycles.



IHC(P)
analysis of
Human
Intestinal
Canc...

Note

For research use only

Application notes

Other applications have not been tested. Optimal dilutions should be determined by end users. . Add 1ml of PBS buffer will yield a concentration of 100ug/ml.

Isotype

Mouse IgG1

Clonality

Monoclonal

MW

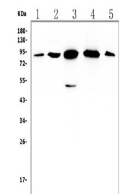
86068 MW

Uniprot ID

[Q68FP1](#)

Expiration Date

12 months from date of receipt.



WB
analysis of
Gelsolin
using anti-
Gelso...