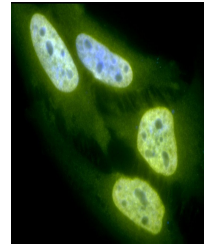


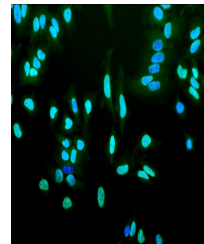
Product Datasheet

Acetylated Lysine Antibody (orb182143)

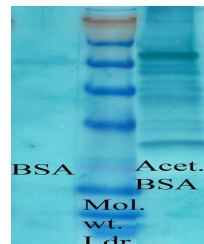
Description	Rabbit Anti-Acetylated Lysine Polyclonal
Species/Host	Rabbit
Reactivity	All
Conjugation	Unconjugated
Tested Applications	ELISA, ICC, IP, WB
Immunogen	Acetylated KLH Conjugated
Target	Acetylated Lysine
Preservatives	PBS, 50% glycerol, 0.09% sodium azide *Storage buffer may change when conjugated
Concentration	1 mg/ml
Storage	-20°C
Note	For research use only
Application notes	A 1/250 dilution of SPC-155 was sufficient to detect the acetylated histone from TSA treated mouse spleen cell in western blot analysis.
Clonality	Polyclonal
Dilution Range	WB (1:250), ICC/IF (1:100)
Expiration Date	12 months from date of receipt.



Immunofluorescence analysis of heat shocked...



Immunofluorescence analysis of heat shocked...



Western Blot analysis of bovine serum al...