

## Product Datasheet

### GRP78 Antibody: RPE (orb181942)

<b>Description</b>	Mouse monoclonal antibody against GRP78, conjugated to RPE.
<b>Species/Host</b>	Mouse
<b>Reactivity</b>	Human, Mouse, Rat
<b>Conjugation</b>	RPE
<b>Tested Applications</b>	ICC, IF, IHC, WB
<b>Immunogen</b>	Full-length recombinant rat GRP78
<b>Target</b>	GRP78
<b>Preservatives</b>	95.64mM Phosphate, 2.48mM MES and 2mM EDTA
<b>Concentration</b>	1 mg/ml
<b>Storage</b>	Conjugated antibodies should be stored according to the product label
<b>Note</b>	For research use only
<b>Application notes</b>	1 µg/ml of SMC-211 was sufficient for detection of GRP78 in 20 µg of HEK-293 lysate by colorimetric immunoblot analysis using Goat anti-mouse IgG:HRP as the secondary antibody.
<b>Isotype</b>	IgG1 Kappa
<b>Clonality</b>	Monoclonal
<b>Clone Number</b>	3G12-1G11
<b>MW</b>	78kDa
<b>Uniprot ID</b>	<b>P06761</b>
<b>NCBI</b>	<b>NP_037215.1</b>

**Biorbyt Ltd.**

7 Signet Court, Swann's Road,  
Cambridge, CB5 8LA, United Kingdom  
Email: [info@biorbyt.com](mailto:info@biorbyt.com), [support@biorbyt.com](mailto:support@biorbyt.com)  
Phone: [+44 \(0\) 1223 859-353](tel:+44(0)1223859353) | Fax: [+1 \(415\) 651-8558](tel:+1(415)6518558)

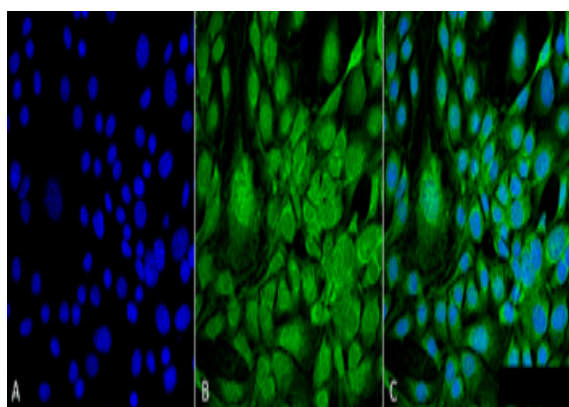
**Biorbyt LLC.**

68 TW Alexander Drive,  
Durham, NC, 27713, United States  
Email: [info@biorbyt.com](mailto:info@biorbyt.com), [support@biorbyt.com](mailto:support@biorbyt.com)  
Phone: [+1 \(415\) 906-5211](tel:+1(415)9065211) | Fax: [+1 \(415\) 651-8558](tel:+1(415)6518558)

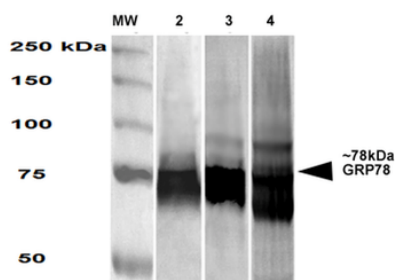
**Entrez** 25617

**Dilution Range** WB (1:1000), ICC/IF (1:100)

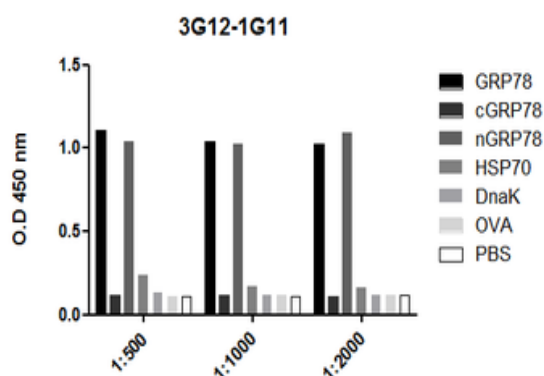
**Expiration Date** 12 months from date of receipt.



Immunocytochemistry/Immunofluorescence analysis using Mouse Anti-GRP78 Monoclonal Antibody, Clone 3G12-1G11. Tissue: Fibroblast cell line (NIH 3T3). Species: Mouse. Fixation: 4% Formaldehyde for 15 min at RT. Primary Antibody: Mouse Anti-GRP78 Monoclonal Antibody at 1:100 for 60 min at RT. Secondary Antibody: Goat Anti-Mouse ATTO 488 at 1:100 for 60 min at RT. Counterstain: DAPI (blue) nuclear stain at 1:5000 for 5 min RT. Localization: Endoplasmic Reticulum, Endoplasmic Reticulum Lumen. Magnification: 60X.



Western Blot analysis of Human, Mouse, Rat HEK-293, NIH3T3, and Rat Brain cell lysates showing detection of GRP78 protein using Mouse Anti-GRP78 Monoclonal Antibody, Clone 3G12-1G11. Primary Antibody: Mouse Anti-GRP78 Monoclonal Antibody at 1:1000.



ELISA analysis using Mouse Anti-GRP78 Monoclonal Antibody, Clone 3G12-1G11. Primary Antibody: Mouse Anti-GRP78 Monoclonal Antibody.

**Biorbyt Ltd.**

7 Signet Court, Swann's Road,  
Cambridge, CB5 8LA, United Kingdom  
Email: [info@biorbyt.com](mailto:info@biorbyt.com), [support@biorbyt.com](mailto:support@biorbyt.com)  
Phone: [+44 \(0\) 1223 859-353](tel:+44(0)1223859353) | Fax: [+1 \(415\) 651-8558](tel:+1(415)6518558)

**Biorbyt LLC.**

68 TW Alexander Drive,  
Durham, NC, 27713, United States  
Email: [info@biorbyt.com](mailto:info@biorbyt.com), [support@biorbyt.com](mailto:support@biorbyt.com)  
Phone: [+1 \(415\) 906-5211](tel:+1(415)9065211) | Fax: [+1 \(415\) 651-8558](tel:+1(415)6518558)