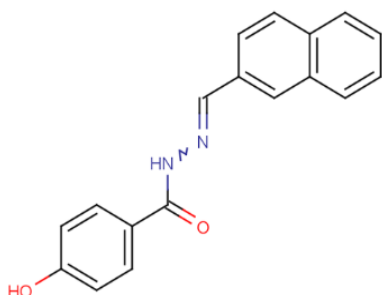


## Product Datasheet

### SLU-PP-332 (orb1819063)

<b>Description</b>	SLU-PP-332 is a pan-estrogen receptor-related receptor (ERR) agonist with high affinity for ERR $\alpha$ , ERR $\beta$ , and ERR $\gamma$ , exhibiting EC <sub>50</sub> values of 98, 230, and 430 nM, respectively. SLU-PP-332 enhances mitochondrial function and cellular respiration, increases type IIa oxidized skeletal muscle fibers, and enhances exercise tolerance in skeletal muscle cell lines. It has potential applications in the study of metabolic diseases, improvement of muscle function, and amelioration of metabolic disorders and aging.
<b>Target</b>	ERR $\gamma$ :430 nM (EC <sub>50</sub> ), ERR $\beta$ :230 nM (EC <sub>50</sub> ), ERR $\alpha$ :98 nM (EC <sub>50</sub> )
<b>Storage</b>	Powder: -20°C for 3 years, In solvent: -80°C for 1 year
<b>Note</b>	For research use only
<b>Formula</b>	C <sub>18</sub> H <sub>14</sub> N <sub>2</sub> O <sub>2</sub>
<b>Purity</b>	98.30%
<b>MW</b>	290.32
<b>CAS Number</b>	303760-60-3
<b>SMILES</b>	C(=NNC(=O)C1=CC=C(O)C=C1)C2=CC3=C(C=C2)C=CC=C3
<b>Expiration Date</b>	12 months from date of receipt.



CAS: 303760-60-3

**Biorbyt Ltd.**

7 Signet Court, Swann's Road,  
Cambridge, CB5 8LA, United Kingdom  
Email: [info@biorbyt.com](mailto:info@biorbyt.com), [support@biorbyt.com](mailto:support@biorbyt.com)  
Phone: [+44 \(0\) 1223 859-353](tel:+44(0)1223859353) | Fax: [+1 \(415\) 651-8558](tel:+1(415)6518558)

**Biorbyt LLC.**

68 TW Alexander Drive,  
Durham, NC, 27713, United States  
Email: [info@biorbyt.com](mailto:info@biorbyt.com), [support@biorbyt.com](mailto:support@biorbyt.com)  
Phone: [+1 \(415\) 906-5211](tel:+1(415)9065211) | Fax: [+1 \(415\) 651-8558](tel:+1(415)6518558)