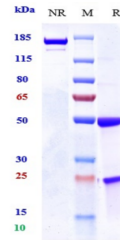


Product Datasheet

Anti-PRLR / Prolactin Receptor Reference Antibody (BAY 1158061) (orb1817955)

Description	This is a receptor for the anterior pituitary hormone prolactin (PRL). Acts as a prosurvival factor ...
Reactivity	Human, Mouse
Endotoxins	< 0.001EU/ µg,determined by LAL method
Conjugation	Unconjugated
Tested Applications	ELISA, FA, FACS, Kinetics
Target	PRLR / Prolactin Receptor
Form/Appearance	Purified monoclonal antibody supplied in PBS, pH6.0, without preservative
Concentration	1mg/ml
Storage	-80°C for 2 years under sterile conditions, -20°C for 1 year under sterile conditions, Avoid repeated freeze-thaw cycles
Note	For research use only
Protein Sequence	PRLR / Prolactin Receptor
Isotype	IgG1
Clonality	Monoclonal
Purity	This antibody is purified through a protein A column
MW	150 KDa
Uniprot ID	P16471
Expiration Date	12 months from date of receipt.



Anti-PRLR / Prolactin Receptor Reference...