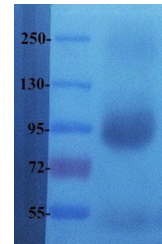


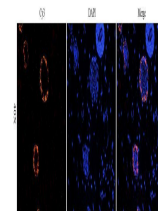
Product Datasheet

PIGR antibody (orb181788)

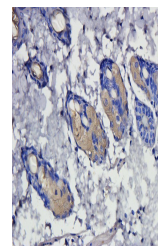
Description	PIGR antibody
Species/Host	Rabbit
Reactivity	Human, Porcine, Rat
Conjugation	Unconjugated
Tested Applications	ELISA, ICC, IF, IHC-P, WB
Immunogen	KLH conjugated synthetic peptide derived from human PIGR. Please contact us for the exact immunogen sequence. The peptide is available as orb374823.
Target	PIGR
Form/Appearance	10 mM PBS, 0.02% sodium azide
Concentration	- 100 µg (in 200 µl): 0.5 mg/ml- 200 µg (in 400 µl): 0.5 mg/ml
Storage	Store at 4°C for up to two weeks. For long term storage, aliquot and store at -20°C, avoid freeze/thaw cycles.
Note	For research use only
Isotype	IgG
Clonality	Polyclonal
Purity	Polyclonal antibodies are purified by peptide affinity chromatography
MW	83 kDa
Uniprot ID	P01833 , P15083
NCBI	002635 , 002644
Entrez	5284
Dilution Range	IHC-P:1:200, WB: 1:500, IF/ICC: 1:200
Expiration Date	12 months from date of receipt.



Western blot analysis of human breast ca...



IF analysis of rat skin tissue using ant...



IHC-P image of rat skin tissue using ant...