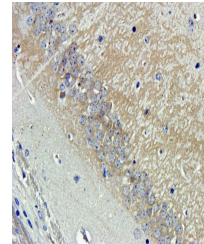


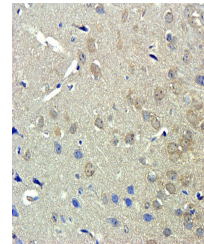
Product Datasheet

beta Actin antibody (orb181785)

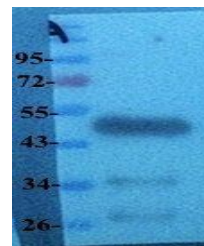
Description	beta Actin antibody
Species/Host	Rabbit
Reactivity	Human, Mouse
Conjugation	Unconjugated
Tested Applications	ELISA, ICC, IF, IHC-P, WB
Immunogen	Recombinant human beta actin protein (orb84841) was used as immunogen.
Target	beta Actin
Form/Appearance	10 mM PBS, 0.02% sodium azide
Concentration	- 100 µg (in 200 µl): 0.5 mg/ml- 200 µg (in 400 µl): 0.5 mg/ml
Note	For research use only
Isotype	IgG
Clonality	Polyclonal
Purity	Polyclonal antibodies are purified by peptide affinity chromatography
MW	42 kDa
Uniprot ID	P60710, P60709
Dilution Range	WB: 1:500, IHC: 1:200, IF/ICC: 1:200
Expiration Date	12 months from date of receipt.



Immunohistochemical staining of paraffin...



IHC-P staining of mouse brain tissue usi...



WB analysis of recombinant human beta ac...