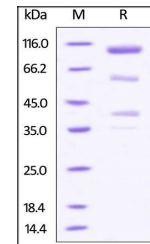


## Product Datasheet

### Cynomolgus Glypican 3 Protein (orb18134)

<b>Description</b>	Cynomolgus Glypican 3, Fc Tag is expressed from human 293 cells (HEK293). It contains AA Gln 25 - Hi...
<b>Reactivity</b>	Monkey
<b>Endotoxins</b>	1.0 EU per µg
<b>Conjugation</b>	Unconjugated
<b>Target</b>	Glypican 3
<b>Preservatives</b>	Tris with Glycine, Arginine and NaCl, pH7.5
<b>Form/Appearance</b>	Powder
<b>Storage</b>	-20°C
<b>Tag</b>	C-Fc
<b>Note</b>	For research use only
<b>Application notes</b>	This protein carries a human IgG1 Fc tag at the C-terminus. This protein contains a furin-like convertase cleavage site, 355-RQYR-358, and will be partially processed into N and C-terminal fragment with calculated MW of 38.1 kDa and 49.4 kDa respectively. The protein migrates as 40 kDa, 60 kDa and 100-120 kDa under reducing (R) condition (SDS-PAGE) due to glycosylation.
<b>Protein Sequence</b>	XP_005594665.1
<b>Purity</b>	90%
<b>Source</b>	Cynomolgus Glypican 3, Fc Tag (orb18134) is expressed from human 293 cells (HEK293). It contains AA Gln 25 - His 559 (Accession # XP_005594665.1).
<b>MW</b>	38.1 kDa and 49.4 kDa
<b>NCBI</b>	<a href="#">XP_005594665.1</a>
<b>Expiration Date</b>	6 months from date of receipt.



SDS-PAGE analysis of Primate Glypican 3 ...