
Product Datasheet

Topoisomerase II alpha/TOP2A Antibody (orb18103)

Description

Topoisomerase II alpha/TOP2A Antibody

Species/Host

Rabbit

Reactivity

Human

Conjugation

Unconjugated

Tested

WB

Applications
Immunogen

A synthetic peptide corresponding to a sequence at the C-terminus of human Topoisomerase II alpha (1466-1480aa RKPSTSDSDSNFEK), different from the related rat sequence by three amino acids, and different from the related mouse sequence by four amino acids

Form/Appearance

Lyophilized

Concentration

Adding 0.2 ml of distilled water will yield a concentration of 500 µg/ml.

Storage

Store at -20°C for one year from date of receipt. After reconstitution, at 4°C for one month. It can also be aliquotted and stored frozen at -20°C for six months. Avoid repeated freeze-thaw cycles.

Note

For research use only

Application notes

Tested Species: In-house tested species with positive results. Predicted Species: Species predicted to be fit for the product based on sequence similarities. Other applications have not been tested. Optimal dilutions should be determined by end users. . Add 0.2ml of distilled water will yield a concentration of 500ug/ml.

Isotype

Rabbit IgG

Clonality

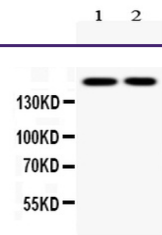
Polyclonal

MW

174385 MW

Uniprot ID
P11388
Expiration Date

12 months from date of receipt.



WB analysis using Anti-Topoisomerase II ...