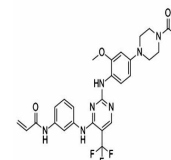


Product Datasheet

Rociletinib (CO-1686) (orb180961)

Description	CO-1686 is a novel, irreversible and orally delivered kinase inhibitor that specifically targets the...
Note	For research use only
Formula	$C_{27}H_{28}F_3N_7O_3$
MW	555.5515
CAS Number	[1374640-70-6]
SMILES	<chem>FC1=C([H])N=C(N=C1N([H])C1C([H])=C([H])C([H])=C(C=1[H])N([H])C(C([H])=C([H])[H])=O)N([H])C1C([H])=C([H])C(=C([H])C=1OC([H])([H])[H])N1C([H])([H])C([H])([H])N(C(C([H])([H])[H])=O)C([H])([H])C1([H])[H])(F)F</chem>
Expiration Date	12 months from date of receipt.



Chemical structure of Rociletinib (CO-16...