

---

## Product Datasheet

### C5/C5a Antibody (orb180697)

**Description**

C5/C5a Antibody


**Species/Host**

Rabbit

**Reactivity**

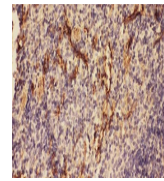
Mouse, Rat

**Conjugation**

Unconjugated

**Tested**

IHC, WB

**Applications**

 IHC(P)  
analysis of  
Mouse Spleen  
Tissue u...

**Immunogen**

A synthetic peptide corresponding to a sequence at the N-terminus of rat C5a (1-18aa DLQLLHQKVEEQAAKYKH), different from the related mouse sequence by four amino acids.

**Form/Appearance**

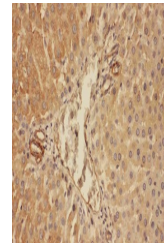
Lyophilized

**Concentration**

Adding 0.2 ml of distilled water will yield a concentration of 500 µg/ml.

**Storage**

Store at -20°C for one year from date of receipt. After reconstitution, at 4°C for one month. It can also be aliquotted and stored frozen at -20°C for six months. Avoid repeated freeze-thaw cycles.

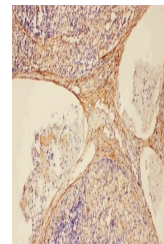

 IHC(P)  
analysis of  
Rat Liver  
Tissue usin...

**Note**

For research use only

**Application notes**

Tested Species: In-house tested species with positive results. Predicted Species: Species predicted to be fit for the product based on sequence similarities. By Heat: Boiling the paraffin sections in 10mM citrate buffer, pH6.0, for 20mins is required for the staining of formalin/paraffin sections. Other applications have not been tested. Optimal dilutions should be determined by end users. . Add 0.2ml of distilled water will yield a concentration of 500ug/ml.


 IHC(P)  
analysis of  
Rat Spleen  
Tissue usi...

**Isotype**

Rabbit IgG

**Clonality**

Polyclonal

**MW**

8981 MW

**Uniprot ID**
**P08650**
**Expiration Date**

12 months from date of receipt.