

Product Datasheet

Rat GC(Glucagon) ELISA Kit (orb1806839)

Description Rat GC(Glucagon) ELISA Kit

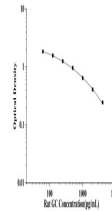
Reactivity Rat

Range 62.5-4000pg/mL

Target GC

Note For research use only

Application notes This ELISA kit uses the Competitive-ELISA principle. The micro ELISA plate provided in this kit has been pre-coated with Rat GC. During the reaction, Rat GC in the sample or standard competes with a fixed amount of Rat GC on the solid phase supporter for sites on the Biotinylated Detection Ab specific to Rat GC. Excess conjugate and unbound sample or standard are washed away, and Avidin-Horseradish Peroxidase (HRP) conjugate are added to each micro plate well and incubated. Then a TMB substrate solution is added to each well. The enzyme-substrate reaction is terminated by the addition of stop solution and the color turns from blue to yellow. The optical density (OD) is measured spectrophotometrically at a wavelength of 450 nm \pm 2 nm. The concentration of Rat GC in tested samples can be calculated by comparing the OD of the samples to the standard curve.



Sample Types serum, plasma, Tissue homogenate and Other biological samples

Sensitivity 37.50 pg/mL

Expiration Date Please enquire.