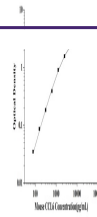

Product Datasheet

Mouse CCL12/MCP-5(Monocyte Chemotactic Protein 5) ELISA Kit (orb1806786)

Description

Mouse CCL12/MCP-5(Monocyte)


Reactivity

Mouse

Range

62.5-4000pg/mL

Target

CCL12/MCP-5

Note

For research use only

Application notes

This ELISA kit uses the Sandwich-ELISA principle. The micro ELISA plate provided in this kit has been pre-coated with an antibody specific to Mouse CCL12/MCP-5. Standards or samples are added to the micro ELISA plate wells and combined with the specific antibody. Then a biotinylated detection antibody specific for Mouse CCL12/MCP-5 and Avidin-Horseradish Peroxidase (HRP) conjugate are added successively to each micro plate well and incubated. Free components are washed away. The substrate solution is added to each well. Only those wells that contain Mouse CCL12/MCP-5, biotinylated detection antibody and Avidin-HRP conjugate will appear blue in color. The enzyme-substrate reaction is terminated by the addition of stop solution and the color turns yellow. The optical density (OD) is measured spectrophotometrically at a wavelength of 450 nm \pm 2 nm. The OD value is proportional to the concentration of Mouse CCL12/MCP-5. You can calculate the concentration of Mouse CCL12/MCP-5 in the samples by comparing the OD of the samples to the standard curve.

Sample Types

serum, plasma, Tissue homogenate and Other biological samples

Sensitivity

37.5 pg/mL

Expiration Date

Please enquire.