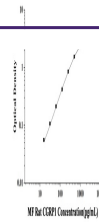

Product Datasheet

MF-Rat CGRP1(Calcitonin Gene Related Peptide 1) ELISA Kit (orb1806591)

Description

MF-Rat CGRP1(Calcitonin Gene Related


Reactivity

Rat

Range

15.63-1000pg/mL

Target

CGRP1

Note

For research use only

Application notes

This ELISA kit uses the Sandwich-ELISA principle. The micro ELISA plate provided in this kit has been pre-coated with an antibody specific to Rat CGRP1. Samples (or Standards) are added to the micro ELISA plate wells and combined with the specific antibody and biotinylated detection antibody specific for Rat CGRP1. Then Avidin-Horseradish Peroxidase (HRP) conjugate are added successively to each micro plate well and incubated. Free components are washed away. The substrate solution is added to each well. Only those wells that contain Rat CGRP1, biotinylated detection antibody and Avidin-HRP conjugate will appear blue in color. The enzyme-substrate reaction is terminated by the addition of stop solution and the color turns yellow. The optical density (OD) is measured spectrophotometrically at a wavelength of 450 nm. The OD value is proportional to the concentration of Rat CGRP1. You can calculate the concentration of Rat CGRP1 in the samples by comparing the OD of the samples to the standard curve.

Sample Types

serum, plasma, Tissue homogenate and Other biological samples Sample volume 25µL

Sensitivity

9.38 pg/mL

Expiration Date

Please enquire.