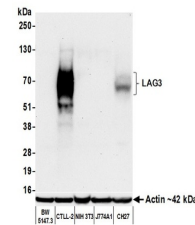


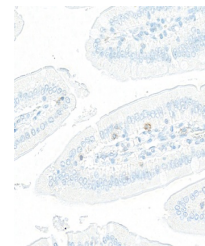
Product Datasheet

LAG3 Antibody (orb1806464)

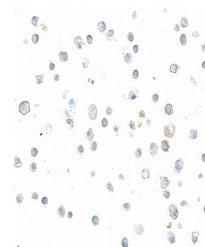
Description	LAG3 Antibody
Species/Host	Rabbit
Reactivity	Mouse
Conjugation	Unconjugated
Tested Applications	ICC, IHC, WB
Immunogen	Between 250 and 300
Target	LAG3
Preservatives	Borate Buffered Saline (BBS) pH 8.2 with 0.09% Sodium Azide, rAlbumin-Free
Form/Appearance	Whole IgG
Concentration	1000 µg/ml
Storage	Shelf life: 1 year from date of receipt. Storage: 2 - 8°C
Note	For research use only
Application notes	Format: Whole IgG
Clonality	Recombinant
Uniprot ID	Q61790
Dilution Range	WB: 1:1000, IHC: 1:100 to 1:500. Epitope retrieval with citrate buffer pH 6.0 is recommended for FFPE tissue sections, ICC: 1:100 to 1:500. Epitope retrieval with citrate buffer pH 6.0 is recommended for FFPE cell sections
Expiration Date	12 months from date of receipt.



Detection of mouse LAG3 by western blot...



Detection of mouse LAG3 by immunohistochem...



Detection of mouse LAG3 by immunocytoche...