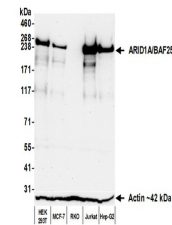


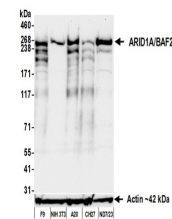
Product Datasheet

ARID1A/BAF250 Antibody (orb1806460)

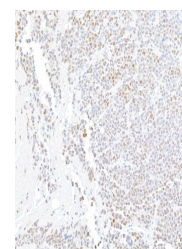
Description	ARID1A/BAF250 Antibody
Species/Host	Rabbit
Reactivity	Human, Mouse
Conjugation	Unconjugated
Tested Applications	FC, ICC, IHC, IP, WB
Immunogen	Between 750 and 800
Target	ARID1A/BAF250
Preservatives	Borate Buffered Saline (BBS) pH 8.2 with 0.1% rAlbumin and 0.09% Sodium Azide
Form/Appearance	Whole IgG
Concentration	50 µg/ml
Storage	Shelf life: 1 year from date of receipt. Storage: 2 - 8°C
Note	For research use only
Application notes	Format: Whole IgG
Clonality	Recombinant
Uniprot ID	O14497
Dilution Range	WB: 1:1000 (3-8% Tris-acetate gel recommended), IP: 20 µl/mg lysate, IHC: 1:100 to 1:500. Epitope retrieval with citrate buffer pH 6.0 is recommended for FFPE tissue sections, ICC: 1:100 to 1:500. Epitope retrieval with citrate buffer pH 6.0 is recommended for FFPE cell sections
Expiration Date	12 months from date of receipt.



Detection of human ARID1A/BAF250 by west...



Detection of mouse ARID1A/BAF250 by west...



Detection of mouse ARID1A/BAF250 by immu...