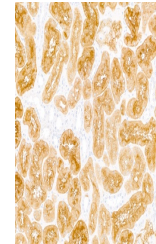


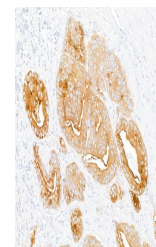
Product Datasheet

DPP4/CD26 Antibody (orb1806444)

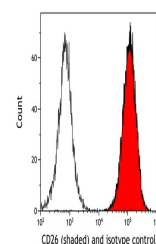
| | |
|----------------------------|--|
| Description | DPP4/CD26 Antibody |
| Species/Host | Rabbit |
| Reactivity | Human |
| Conjugation | Unconjugated |
| Tested Applications | FC, ICC, IHC |
| Immunogen | Residues 29-766 (ECD) |
| Target | DPP4/CD26 |
| Preservatives | Borate Buffered Saline (BBS) pH 8.2 with 0.1% rAlbumin and 0.09% Sodium Azide |
| Form/Appearance | Whole IgG |
| Concentration | 500 µg/ml |
| Storage | Shelf life: 1 year from date of receipt. Storage: 2 - 8°C |
| Note | For research use only |
| Application notes | Format: Whole IgG |
| Clonality | Recombinant |
| Uniprot ID | P27487 |
| Dilution Range | IHC: 1:100 to 1:500. Epitope retrieval with citrate buffer pH 6.0 is recommended for FFPE tissue sections, ICC: 1:100 to 1:500. Epitope retrieval with citrate buffer pH 6.0 is recommended for FFPE cell sections |
| Expiration Date | 12 months from date of receipt. |



Detection of human DPP4/CD26 by immunohi...



Detection of human DPP4/CD26 by immunohi...



Detection of human CD26 (shaded) in 786-...