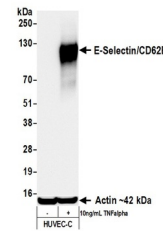


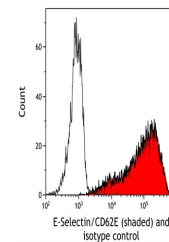
Product Datasheet

E-Selectin/CD62E Antibody (orb1806427)

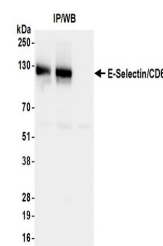
Description	E-Selectin/CD62E Antibody
Species/Host	Rabbit
Reactivity	Human
Conjugation	Unconjugated
Tested Applications	FC, ICC, IHC, IP, WB
Immunogen	Residues 22-555 (ECD)
Target	E-Selectin/CD62E
Preservatives	Borate Buffered Saline (BBS) pH 8.2 with 0.09% Sodium Azide, rAlbumin-Free
Form/Appearance	Whole IgG
Concentration	1000 µg/ml
Storage	Shelf life: 1 year from date of receipt. Storage: 2 - 8°C
Note	For research use only
Application notes	Format: Whole IgG
Clonality	Recombinant
Uniprot ID	P16581
Dilution Range	WB: 1:1000, IP: 6 µl/mg lysate, IHC: 1:100 to 1:500. Epitope retrieval with citrate buffer pH 6.0 is recommended for FFPE tissue sections, ICC: 1:100 to 1:500. Epitope retrieval with citrate buffer pH 6.0 is recommended for FFPE cell sections
Expiration Date	12 months from date of receipt.



Detection of human E-Selectin/CD62E by w...



Detection of human E-Selectin/CD62E (sha...



Detection of human E-Selectin/CD62E by w...