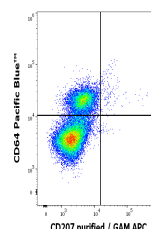


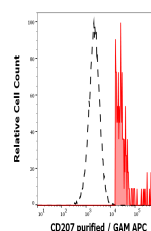
## Product Datasheet

### CD207 Antibody (orb1806417)

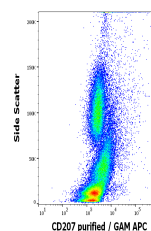
<b>Description</b>	CD207 is a 40 kDa type II transmembrane glycoprotein of the C-type lectin family. It binds to mannos...
<b>Reactivity</b>	Human, Primate
<b>Conjugation</b>	Unconjugated
<b>Tested Applications</b>	ELISA, FC, ICC, IHC-Fr
<b>Immunogen</b>	Fusion protein of human CD207 extracellular part and IgG Fc fragment
<b>Target</b>	CD207
<b>Preservatives</b>	Phosphate buffered saline (PBS), pH 7.4, 15 mM sodium azide
<b>Concentration</b>	1 mg/ml
<b>Storage</b>	Store at 2-8°C. Do not freeze.
<b>Note</b>	For research use only
<b>Application notes</b>	Flow cytometry: Recommended dilution: 0.5-4 µg/ml. Extracellular and intracellular staining.
<b>Isotype</b>	Mouse IgG1 lambda
<b>Clonality</b>	Monoclonal
<b>Uniprot ID</b>	<a href="#">Q9UJ71</a>
<b>Entrez</b>	<a href="#">50489</a>
<b>Expiration Date</b>	12 months from date of receipt.



Flow cytometry  
multicolor  
intracellular  
...



Separation of human CD64 positive CD207 ...



Flow cytometry  
intracellular staining pa...