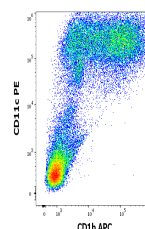


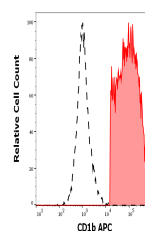
Product Datasheet

CD1b Antibody (APC) (orb1806415)

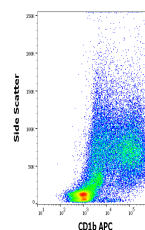
Description	CD1b (also known as R1) together with CD1a and c, belongs to group 1 of CD1 antigens. These non-clas...
Reactivity	Human
Conjugation	APC
Tested Applications	FC
Immunogen	A cell membrane antigen preparation that was isolated from normal human thymocytes
Target	CD1b
Preservatives	Stabilizing phosphate buffered saline (PBS), pH 7.4, 15 mM sodium azide
Storage	Store at 2-8°C. Protect from prolonged exposure to light. Do not freeze.
Note	For research use only
Application notes	Flow cytometry: The reagent is designed for analysis of human blood cells using 10 µl reagent / 100 µl of whole blood or 106 cells in a suspension. The content of a vial (1 ml) is sufficient for 100 tests.
Isotype	Mouse IgG1 kappa
Clonality	Monoclonal
Uniprot ID	P29016
Entrez	910
Expiration Date	12 months from date of receipt.



Flow cytometry multicolor surface staini...



Separation of human CD11c positive CD1b ...



Flow cytometry surface staining pattern ...