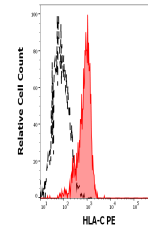


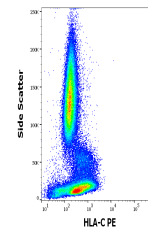
Product Datasheet

HLA-C Antibody (PE) (orb1806412)

Description	HLA-C, a member of MHC class I glycoproteins, is one of polymorphysm typing targets, which are impor...
Reactivity	Human, Primate
Conjugation	PE
Tested Applications	FC
Immunogen	Purified MHC class I molecules of tamarin origin
Target	HLA-C
Preservatives	Stabilizing phosphate buffered saline (PBS), pH 7.4, 15 mM sodium azide
Storage	Store at 2-8°C. Protect from prolonged exposure to light. Do not freeze.
Note	For research use only
Application notes	Flow cytometry: The reagent is designed for analysis of human blood cells using 10 µl reagent / 100 µl of whole blood or 106 cells in a suspension. The content of a vial (1 ml) is sufficient for 100 tests.
Isotype	Mouse IgG2b
Clonality	Monoclonal
Uniprot ID	P10321
Entrez	3107
Expiration Date	12 months from date of receipt.



Separation of human basophils (red-fille...



Flow cytometry surface staining pattern ...