

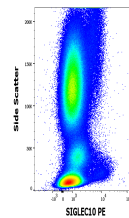
Product Datasheet

SIGLEC10 Antibody (PE) (orb1806410)

Description	SIGLEC10 is a CD33-related receptor of sialoglycans, expressed on eosinophils, monocytes, a subpopul...
Reactivity	Human
Conjugation	PE
Tested Applications	FC
Immunogen	SIGLEC10 extracellular domain fused with human IgG1 Fc fragment
Target	SIGLEC10
Preservatives	Stabilizing phosphate buffered saline (PBS), pH 7.4, 15 mM sodium azide
Storage	Store at 2-8°C. Protect from prolonged exposure to light. Do not freeze.
Note	For research use only
Application notes	Flow cytometry: The reagent is designed for analysis of human blood cells using 10 µl reagent / 100 µl of whole blood or 106 cells in a suspension. The content of a vial (1 ml) is sufficient for 100 tests.
Isotype	Mouse IgG1
Clonality	Monoclonal
Uniprot ID	Q96LC7
Entrez	89790
Expiration Date	12 months from date of receipt.



Expression profiling on peripheral blood...



Anti-SIGLEC10 PE antibody (clone 5G6) wo...