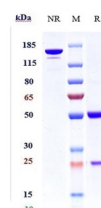


Product Datasheet

Anti-CDH6 / K-Cadherin Reference Antibody (orb1806273)

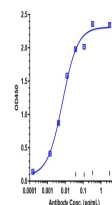
Description	Anti-CDH6 / K-Cadherin Reference Antibody is expressed from CHO. The heavy chain type is hulgG1, and...
Reactivity	Human
Endotoxins	< 1 EU/mg
Conjugation	Unconjugated
Tested Applications	ELISA, FA, FACS, Kinetics
Target	CDH6 / K-Cadherin
Preservatives	100 mM Pro-Ac 20 mM Arg pH 5.0
Storage	Maintain refrigerated at 2-8°C for up to 2 weeks. For long term storage store at -20°C in small aliquots to prevent freeze-thaw cycles.
Note	For research use only
Isotype	IgG
Clonality	Monoclonal
Purity	> 95%
MW	150 kDa
Expiration Date	12 months from date of receipt.



Anti-CDH6 / K-Cadherin Reference Antibod...



The purity of Anti-CDH6 / K-Cadherin Ref...



Immobilized Cyno CDH6 His at 2 μg/mL ca...