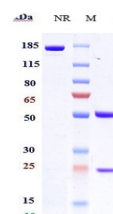


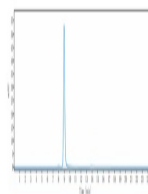
Product Datasheet

Anti-CCL20 Reference Antibody (orb1806241)

Description	Anti-CCL20 Reference Antibody is expressed from CHO. The heavy chain type is hulgG1, and the light C...
Reactivity	Human
Endotoxins	< 1 EU/mg
Conjugation	Unconjugated
Tested Applications	ELISA, FA, FACS, Kinetics
Target	CCL20
Preservatives	100 mM Pro-Ac 20 mM Arg pH 5.0
Storage	-80°C
Note	For research use only
Isotype	IgG
Clonality	Monoclonal
Purity	> 95%
MW	145.5 kDa
Expiration Date	12 months from date of receipt.



Anti-CCL20 Reference Antibody (GSK305000...



The purity of Anti-CCL20 Reference Antib...