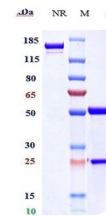


## Product Datasheet

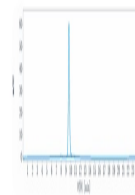
### Anti-CLDN6 Reference Antibody (orb1806238)

<b>Description</b>	Anti-CLDN6 Reference Antibody is expressed from CHO. It has a predicted MW of 145.5 kDa.
<b>Reactivity</b>	Human
<b>Endotoxins</b>	< 1 EU/mg
<b>Conjugation</b>	Unconjugated
<b>Tested Applications</b>	ELISA, FA, FACS, Kinetics
<b>Target</b>	CLDN6
<b>Preservatives</b>	100 mM Pro-Ac 20 mM Arg pH 5.0
<b>Storage</b>	Maintain refrigerated at 2-8°C for up to 2 weeks. For long term storage store at -20°C in small aliquots to prevent freeze-thaw cycles.
<b>Note</b>	For research use only
<b>Isotype</b>	IgG
<b>Clonality</b>	Monoclonal
<b>Purity</b>	> 95%
<b>MW</b>	145.5 kDa
<b>Expiration Date</b>	12 months from date of receipt.

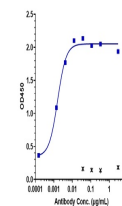


Anti-CLDN6 Reference Antibody (IMAB027)

...



The purity of Anti-CLDN6 Reference Antib...



Immobilized human CLDN6 VLP at 8 µg/mL

...