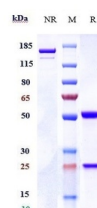


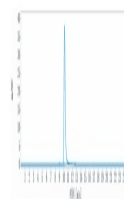
## Product Datasheet

# Anti-CDH6 / K-Cadherin Reference Antibody (orb1806091)

|                            |   |
|----------------------------|---|
| <b>Description</b>         | Anti-CDH6 / K-Cadherin Reference Antibody is expressed from CHO. The heavy chain type is hulgG1, and...                                 |
| <b>Reactivity</b>          | Human   |
| <b>Endotoxins</b>          | < 1 EU/mg   |
| <b>Conjugation</b>         | Unconjugated  |
| <b>Tested Applications</b> | ELISA, FA, FACS, Kinetics   |
| <b>Target</b>              | CDH6 / K-Cadherin   |
| <b>Preservatives</b>       | 100 mM Pro-Ac 20 mM Arg pH 5.0  |
| <b>Storage</b>             | Maintain refrigerated at 2-8°C for up to 2 weeks. For long term storage store at -20°C in small aliquots to prevent freeze-thaw cycles. |
| <b>Note</b>                | For research use only   |
| <b>Isotype</b>             | IgG   |
| <b>Clonality</b>           | Monoclonal  |
| <b>Purity</b>              | > 95%   |
| <b>MW</b>                  | 145.5 kDa   |
| <b>Expiration Date</b>     | 12 months from date of receipt.   |



Anti-CDH6 / K-Cadherin Reference Antibod...



The purity of Anti-CDH6 / K-Cadherin Ref...