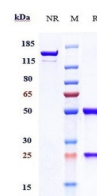


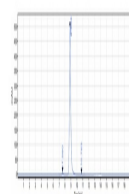
Product Datasheet

Anti-GUCY2C Reference Antibody (orb1806056)

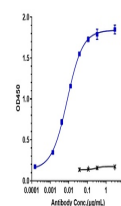
| | |
|----------------------------|---|
| Description | Anti-GUCY2C Reference Antibody is expressed from CHO. The heavy chain type is hulgG1, and the light ... |
| Reactivity | Human |
| Endotoxins | < 1 EU/mg |
| Conjugation | Unconjugated |
| Tested Applications | ELISA, FA, FACS, Kinetics |
| Target | GUCY2C |
| Preservatives | 100 mM Pro-Ac 20 mM Arg pH 5.0 |
| Storage | Maintain refrigerated at 2-8°C for up to 2 weeks. For long term storage store at -20°C in small aliquots to prevent freeze-thaw cycles. |
| Note | For research use only |
| Isotype | IgG |
| Clonality | Monoclonal |
| Purity | > 95% |
| MW | 145.5 kDa |
| Expiration Date | 12 months from date of receipt. |



Anti-GUCY2C Reference Antibody (indusatu...



The purity of Anti-GUCY2C Reference Anti...



Immobilized human GUCY2C His at 2 µg/mL...