

## Product Datasheet

# Anti-B7-H1 / PD-L1 / CD274 Reference Antibody (orb1805926)

**Description** Anti-B7-H1 / PD-L1 / CD274 Reference Antibody is expressed from CHO. The heavy chain type is hulgG4S...

**Reactivity** Human

**Endotoxins** < 1 EU/mg

**Conjugation** Unconjugated

**Tested Applications** ELISA, FA, FACS, Kinetics

**Target** B7-H1 / PD-L1 / CD274

**Preservatives** 100 mM Pro-Ac 20 mM Arg pH 5.0

**Storage** Maintain refrigerated at 2-8°C for up to 2 weeks. For long term storage store at -20°C in small aliquots to prevent freeze-thaw cycles.

**Note** For research use only

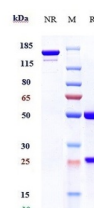
**Isotype** IgG

**Clonality** Monoclonal

**Purity** > 95%

**MW** 145.5 kDa

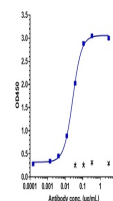
**Expiration Date** 12 months from date of receipt.



Anti-B7-H1 / PD-L1 / CD274 Reference Ant...



The purity of Anti-B7-H1 / PD-L1 / CD274...



Immobilized human PD L1 His at 2 µg/mL ...