

Product Datasheet

Anti-CB1 / CNR1 Reference Antibody (orb1805913)

Description Anti-CB1 / CNR1 Reference Antibody is expressed from CHO. The heavy chain type is hulgG4SP, and the ...

Reactivity Human

Endotoxins < 1 EU/mg

Conjugation Unconjugated

Tested Applications ELISA, FA, FACS, Kinetics

Target CB1 / CNR1

Preservatives 100 mM Pro-Ac 20 mM Arg pH 5.0

Storage Maintain refrigerated at 2-8°C for up to 2 weeks. For long term storage store at -20°C in small aliquots to prevent freeze-thaw cycles.

Note For research use only

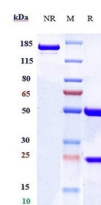
Isotype IgG

Clonality Monoclonal

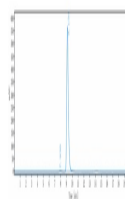
Purity > 95%

MW 145.5 kDa

Expiration Date 12 months from date of receipt.



Anti-CB1 / CNR1 Reference Antibody (nima...



The purity of Anti-CB1 / CNR1 Reference

...