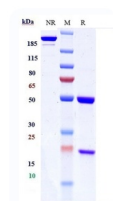


Product Datasheet

Anti-IGF1R / CD221 Reference Antibody (orb1805767)

Description	Anti-IGF1R / CD221 Reference Antibody is expressed from CHO. The heavy chain type is hulgG1, and the...
Reactivity	Human
Endotoxins	< 1 EU/mg
Conjugation	Unconjugated
Tested Applications	ELISA, FA, FACS, Kinetics
Target	IGF1R / CD221
Preservatives	100 mM Pro-Ac 20 mM Arg pH 5.0
Storage	Maintain refrigerated at 2-8°C for up to 2 weeks. For long term storage store at -20°C in small aliquots to prevent freeze-thaw cycles.
Note	For research use only
Isotype	IgG
Clonality	Monoclonal
Purity	> 95%
MW	145.5 kDa
Expiration Date	12 months from date of receipt.



Anti-IGF1R /
CD221
Reference
Antibody
(I...



The purity
of Anti-
IGF1R /
CD221
Referen...