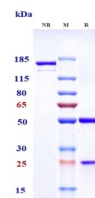


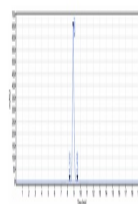
Product Datasheet

Anti-SLC34A2 Reference Antibody (orb1805573)

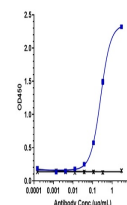
Description	Anti-SLC34A2 Reference Antibody is expressed from CHO. The heavy chain type is hulgG1, and the light...
Reactivity	Human
Endotoxins	< 1 EU/mg
Conjugation	Unconjugated
Tested Applications	ELISA, FA, FACS, Kinetics
Target	SLC34A2
Preservatives	100 mM Pro-Ac 20 mM Arg pH 5.0
Storage	Maintain refrigerated at 2-8°C for up to 2 weeks. For long term storage store at -20°C in small aliquots to prevent freeze-thaw cycles.
Note	For research use only
Isotype	IgG
Clonality	Monoclonal
Purity	> 95%
MW	145.5 kDa
Expiration Date	12 months from date of receipt.



Anti-NaPi2b / SLC34A2 Reference Antibody...



The purity of Anti-NaPi2b / SLC34A2 Refe...



Immobilized human SLC34A2(188 361aa) Fc ...