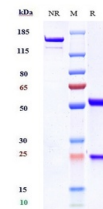


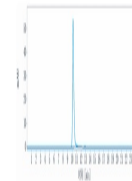
Product Datasheet

Anti-CLDN6 Reference Antibody (orb1805483)

Description	Anti-CLDN6 Reference Antibody) is expressed from CHO. The heavy chain type is IgG1, and the light ch...
Reactivity	Human
Endotoxins	< 1 EU/mg
Conjugation	Unconjugated
Tested Applications	ELISA, FA, FACS, Kinetics
Target	CLDN6
Preservatives	100 mM Pro-Ac 20 mM Arg pH 5.0
Storage	Maintain refrigerated at 2-8°C for up to 2 weeks. For long term storage store at -20°C in small aliquots to prevent freeze-thaw cycles.
Note	For research use only
Isotype	IgG
Clonality	Monoclonal
Purity	> 95%
MW	150 kDa
Expiration Date	12 months from date of receipt.



Anti-CLDN6 Reference Antibody (AE3-20) o...



The purity of Anti-CLDN6 Reference Antib...