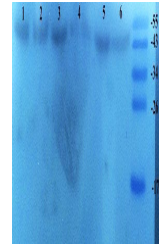


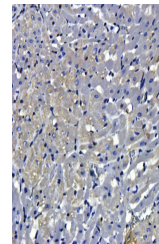
Product Datasheet

SNAIL antibody (orb180479)

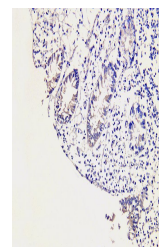
Description	SNAIL antibody
Species/Host	Rabbit
Reactivity	Human, Mouse, Porcine, Rat
Conjugation	Unconjugated
Tested Applications	ELISA, IHC-P, WB
Immunogen	KLH conjugated synthetic peptide derived from human SNAIL. Please contact us for the exact immunogen sequence. The peptide is available as orb374821.
Target	SNAIL
Form/Appearance	10 mM PBS, 0.02% sodium azide
Concentration	- 100 µg (in 200 µl): 0.5 mg/ml- 200 µg (in 400 µl): 0.5 mg/ml
Storage	Aliquot and store at -20°C or -80°C for long term. Avoid repeated freeze/thaw cycles.
Note	For research use only
Isotype	IgG
Clonality	Polyclonal
Purity	Polyclonal antibodies are purified by peptide affinity chromatography
MW	29 kDa
Uniprot ID	O95863
NCBI	21 , 31 , 005985 , 005976
Entrez	6615
Dilution Range	WB: 1:500 IHC-P: 1:500
Expiration Date	12 months from date of receipt.



Western blot analysis of human breast ca...



IHC-P image of rat heart tissue using Sn...



IHC-P staining of pig large intestines t...