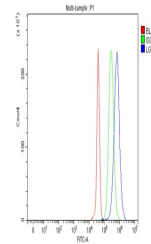


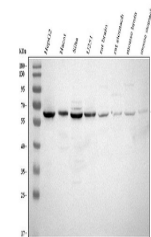
## Product Datasheet

### Anti-LGI4 Antibody (orb1804694)

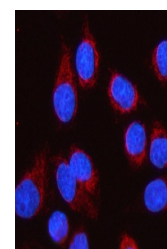
|                            |  |
|----------------------------|--|
| <b>Description</b>         | Anti-LGI4 Antibody   |
| <b>Species/Host</b>        | Rabbit   |
| <b>Reactivity</b>          | Human, Mouse, Rat  |
| <b>Conjugation</b>         | Unconjugated   |
| <b>Tested Applications</b> | ELISA, FC, ICC, IF, IHC, WB  |
| <b>Immunogen</b>           | E.coli-derived human LGI4 recombinant protein (Position: E225-H531).   |
| <b>Form/Appearance</b>     | Lyophilized  |
| <b>Concentration</b>       | Adding 0.2 ml of distilled water will yield a concentration of 500 µg/ml.  |
| <b>Storage</b>             | At -20°C for one year from date of receipt. After reconstitution, at 4°C for one month. It can also be aliquotted and stored frozen at -20°C for six months. Avoid repeated freezing and thawing.  |
| <b>Note</b>                | For research use only  |
| <b>Application notes</b>   | Western blot, 0.25-0.5 µg/ml, Human, Mouse, Rat<br>Immunohistochemistry, 2-5 µg/ml, Human<br>Immunocytochemistry/Immunofluorescence, 5 µg/ml, Human<br>Flow Cytometry (Fixed), 1-3 µg/1x10 <sup>6</sup> cells, Human<br>ELISA, 0.1-0.5 µg/ml, Human. Tested Species: In-house tested species with positive results. Other applications have not been tested. Optimal dilutions should be determined by end users. Adding 0.2 ml of distilled water will yield a concentration of 500 µg/ml |
| <b>Clonality</b>           | Polyclonal   |
| <b>MW</b>                  | 59 kDa   |
| <b>Uniprot ID</b>          | <b>Q8N135</b>  |
| <b>Expiration Date</b>     | 12 months from date of receipt.  |



Flow Cytometry analysis of JK cells usin...



WB analysis of LGI4 using anti-LGI4 anti...



IF analysis of LGI4 using anti-LGI4 anti...