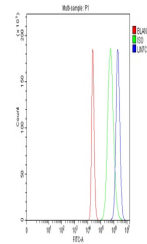


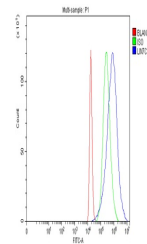
Product Datasheet

Anti-LIN7C Antibody (orb1804680)

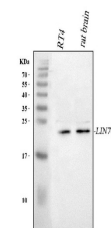
Description	Anti-LIN7C Antibody
Species/Host	Rabbit
Reactivity	Human, Rat
Conjugation	Unconjugated
Tested Applications	ELISA, FC, IHC, WB
Immunogen	E.coli-derived human LIN7C recombinant protein (Position: M1-A73).
Form/Appearance	Lyophilized
Concentration	Adding 0.2 ml of distilled water will yield a concentration of 500 µg/ml.
Storage	At -20°C for one year from date of receipt. After reconstitution, at 4°C for one month. It can also be aliquotted and stored frozen at -20°C for six months. Avoid repeated freezing and thawing.
Note	For research use only
Application notes	Western blot, 0.25-0.5 µg/ml, Human, Rat Immunohistochemistry, 2-5 µg/ml, Human, Rat Flow Cytometry (Fixed), 1-3 µg/1x10 ⁶ cells, Human ELISA, 0.1-0.5 µg/ml, Human. Adding 0.2 ml of distilled water will yield a concentration of 500 µg/ml
Isotype	IgG
Clonality	Polyclonal
MW	22 kDa
Uniprot ID	Q9NUP9
Expiration Date	12 months from date of receipt.



Flow Cytometry analysis of THP-1 cells u...



Flow Cytometry analysis of THP-1 cells u...



WB analysis of LIN7C using anti-LIN7C an...