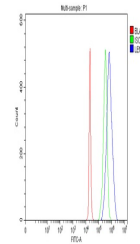


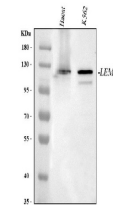
Product Datasheet

Anti-LEMD3 Antibody (orb1804669)

Description	Anti-LEMD3 Antibody
Species/Host	Rabbit
Reactivity	Human
Conjugation	Unconjugated
Tested Applications	ELISA, FC, WB
Immunogen	E.coli-derived human LEMD3 recombinant protein (Position: H535-H852).
Form/Appearance	Lyophilized
Concentration	Adding 0.2 ml of distilled water will yield a concentration of 500 µg/ml.
Storage	At -20°C for one year from date of receipt. After reconstitution, at 4°C for one month. It can also be aliquotted and stored frozen at -20°C for six months. Avoid repeated freezing and thawing.
Note	For research use only
Application notes	Western blot, 0.25-0.5 µg/ml, Human Flow Cytometry (Fixed), 1-3 µg/1x10 ⁶ cells, Human ELISA, 0.1-0.5 µg/ml, Human. Adding 0.2 ml of distilled water will yield a concentration of 500 µg/ml
Isotype	IgG
Clonality	Polyclonal
MW	120 kDa
Uniprot ID	Q9Y2U8
Expiration Date	12 months from date of receipt.



Flow Cytometry analysis of 293T cells us...



WB analysis of MAN1/LEMD3 using anti-MAN...