
Product Datasheet

GST3/GST pi/GSTP1 Antibody (orb18037)

Description

GST3/GST pi/GSTP1 Antibody

Species/Host

Rabbit

Reactivity

Human, Mouse, Rat

Conjugation

Unconjugated

Tested Applications

IHC, WB

Immunogen

A synthetic peptide corresponding to a sequence at the C-terminus of human GST3 (197-210aa PEYVNLPIGNGKQ), different from the related mouse sequence by two amino acids.

Form/Appearance

Lyophilized

Concentration

Adding 0.2 ml of distilled water will yield a concentration of 500 µg/ml.

Storage

Store at -20°C for one year from date of receipt. After reconstitution, at 4°C for one month. It can also be aliquotted and stored frozen at -20°C for six months. Avoid repeated freeze-thaw cycles.

Note

For research use only

Application notes

Tested Species: In-house tested species with positive results. Predicted Species: Species predicted to be fit for the product based on sequence similarities. Other applications have not been tested. Optimal dilutions should be determined by end users. . Add 0.2ml of distilled water will yield a concentration of 500ug/ml.

Isotype

Rabbit IgG

Clonality

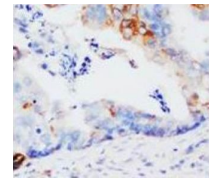
Polyclonal

MW

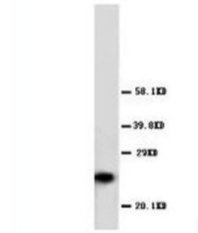
23356 MW

Uniprot ID
[P09211](#)
Expiration Date

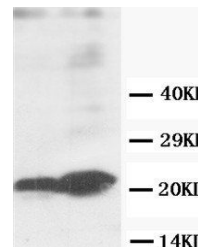
12 months from date of receipt.



Immunohistochemical analysis of paraffin...



Western Blot analysis of HeLa cell lysat...



WB analysis of MCF-7 and Colo320 cells. ...