

---

## Product Datasheet

### C-C chemokine receptor type 5 CCR5 Antibody (orb18015)

**Description**

C-C chemokine receptor type 5 CCR5


**Species/Host**

Rabbit

**Reactivity**

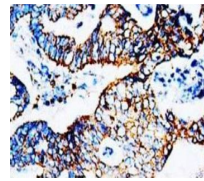
Human, Mouse, Rat

**Conjugation**

Unconjugated

**Tested Applications**

WB



IHC-P of human rectal carcinoma tissue (...

**Immunogen**

A synthetic peptide corresponding to a sequence at the N-terminus of human CCR5 (19-34aa PCQKINVKQIAARLLP), different from the related rat sequence by two amino acids.

**Form/Appearance**

Lyophilized

**Concentration**

Adding 0.2 ml of distilled water will yield a concentration of 500 µg/ml.

**Storage**

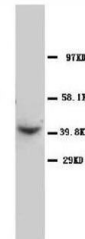
Store at -20°C for one year from date of receipt. After reconstitution, at 4°C for one month. It can also be aliquotted and stored frozen at -20°C for six months. Avoid repeated freeze-thaw cycles.

**Note**

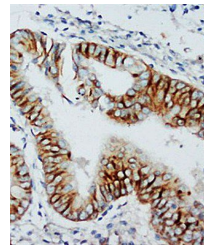
For research use only

**Application notes**

Tested Species: In-house tested species with positive results. Predicted Species: Species predicted to be fit for the product based on sequence similarities. Other applications have not been tested. Optimal dilutions should be determined by end users. . Add 0.2ml of distilled water will yield a concentration of 500ug/ml.



Western Blot analysis of rat liver tissu...



Immunohistochemical analysis of paraffin...

**Isotype**

Rabbit IgG

**Clonality**

Polyclonal

**MW**

40524 MW

**Uniprot ID**
**P51681**
**Expiration Date**

12 months from date of receipt.