
Product Datasheet

Calretinin/CALB2 Antibody (orb18014)

Description

Calretinin/CALB2 Antibody

Species/Host

Rabbit

Reactivity

Human, Mouse, Rat

Conjugation

Unconjugated

Tested Applications

IF, IHC, WB

Immunogen

A synthetic peptide corresponding to a sequence at the N-terminus of human Calretinin (4-18aa PQQPPYLHLAELTA), identical to the related rat sequence.

Form/Appearance

Lyophilized

Concentration

Adding 0.2 ml of distilled water will yield a concentration of 500 µg/ml.

Storage

Store at -20°C for one year from date of receipt. After reconstitution, at 4°C for one month. It can also be aliquotted and stored frozen at -20°C for six months. Avoid repeated freeze-thaw cycles.

Note

For research use only

Application notes

Tested Species: In-house tested species with positive results. Predicted Species: Species predicted to be fit for the product based on sequence similarities. By Heat: Boiling the paraffin sections in 10mM citrate buffer, pH6.0, for 20mins is required for the staining of formalin/paraffin sections. Other applications have not been tested. Optimal dilutions should be determined by end users.

Isotype

Rabbit IgG

Clonality

Polyclonal

MW

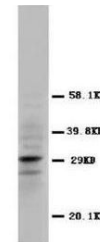
31540 MW

Uniprot ID
[P22676](#)
Expiration Date

12 months from date of receipt.



Immunohistochemical analysis of paraffin...



Western Blot analysis of Hela cell lysat...