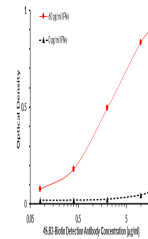


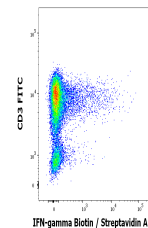
## Product Datasheet

### IFN gamma antibody (Biotin) (orb179917)

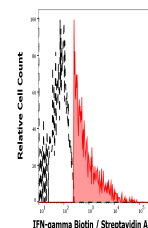
<b>Description</b>	Mouse monoclonal antibody against IFN gamma conjugated to Biotin
<b>Reactivity</b>	Human, Primate
<b>Conjugation</b>	Biotin
<b>Tested Applications</b>	ELISA, FC, ICC, IHC-P, IP, WB
<b>Immunogen</b>	Interferon gamma derived from human leukocytes
<b>Target</b>	IFN gamma
<b>Preservatives</b>	Stabilizing phosphate buffered saline (PBS), pH 7.4, 15 mM sodium azide
<b>Concentration</b>	1 mg/ml
<b>Storage</b>	Store at 2-8°C. Do not freeze.
<b>Note</b>	For research use only
<b>Application notes</b>	Flow cytometry: Recommended dilution 1-4 µg/ml. Intracellular staining.
<b>Isotype</b>	Mouse IgG1 kappa
<b>Clonality</b>	Monoclonal
<b>Purity</b>	Purified antibody is conjugated with biotin LC-NHS ester under optimum conditions and unconjugated antibody and free biotin are removed by size-exclusion chromatography.
<b>Uniprot ID</b>	<a href="#">P01579</a>
<b>Entrez</b>	<a href="#">3458</a>
<b>Dilution Range</b>	Flow cytometry: Recommended dilution 1-4 µg/ml. Intracellular staining. ELISA: Detection antibody in combination with capture antibody NIB42.
<b>Expiration Date</b>	12 months from date of receipt.



Cytokine IFN gamma (IFN $\gamma$ ) sandwich ELIS...



Flow cytometry multicolor intracellular ...



Separation of human IFN-gamma positive C...