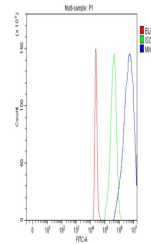


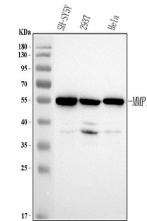
Product Datasheet

Anti-MMP19 Antibody (orb1786110)

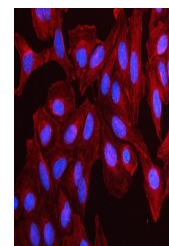
Description	Anti-MMP19 Antibody
Species/Host	Rabbit
Reactivity	Human
Conjugation	Unconjugated
Tested Applications	ELISA, FC, ICC, IF, IHC, WB
Immunogen	E.coli-derived human MMP19 recombinant protein (Position: L120-D437).
Form/Appearance	Lyophilized
Concentration	Adding 0.2 ml of distilled water will yield a concentration of 500 µg/ml.
Storage	At -20°C for one year from date of receipt. After reconstitution, at 4°C for one month. It can also be aliquotted and stored frozen at -20°C for six months. Avoid repeated freezing and thawing.
Note	For research use only
Application notes	Western blot, 0.1-0.25 µg/ml, Human Immunohistochemistry, 2-5 µg/ml, Human Immunocytochemistry/Immunofluorescence, 5 µg/ml, Human Flow Cytometry (Fixed), 1-3 µg/1x10 ⁶ cells, Human ELISA, 0.1-0.5 µg/ml, Human. Adding 0.2 ml of distilled water will yield a concentration of 500 µg/ml
Isotype	Rabbit IgG
Clonality	Polyclonal
MW	54 kDa
Uniprot ID	Q99542
Expiration Date	12 months from date of receipt.



Flow Cytometry analysis of 293T cells us...



WB analysis of MMP19 using anti-MMP19 an...



IF analysis of MMP19 using anti-MMP19 an...