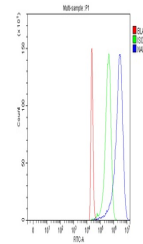


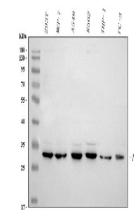
Product Datasheet

Anti-Alpha SNAP/NAPA Antibody (orb1786087)

Description	Anti-Alpha SNAP/NAPA Antibody
Species/Host	Rabbit
Reactivity	Human
Conjugation	Unconjugated
Tested Applications	FC, WB
Immunogen	A synthetic peptide corresponding to a sequence of human Alpha SNAP/NAPA (KEAEAMALLAEAERKVKNSQSFFC).
Form/Appearance	Lyophilized
Concentration	Adding 0.2 ml of distilled water will yield a concentration of 500 µg/ml.
Storage	At -20°C for one year from date of receipt. After reconstitution, at 4°C for one month. It can also be aliquotted and stored frozen at -20°C for six months. Avoid repeated freezing and thawing.
Note	For research use only
Application notes	Western blot, 0.25-0.5 µg/ml, Human Flow Cytometry (Fixed), 1-3 µg/1x10 ⁶ cells, Human. Adding 0.2 ml of distilled water will yield a concentration of 500 µg/ml
Isotype	Rabbit IgG
Clonality	Polyclonal
MW	33 kDa
Uniprot ID	P54920
Expiration Date	12 months from date of receipt.



Flow Cytometry analysis of 293T cells using ant...



WB analysis of Alpha SNAP/NAPA using ant...