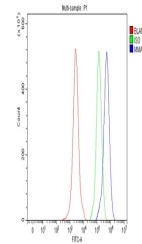


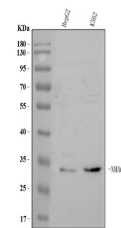
Product Datasheet

Anti-MMACHC Antibody (orb1786083)

| | |
|----------------------------|--|
| Description | Anti-MMACHC Antibody |
| Species/Host | Rabbit |
| Reactivity | Human |
| Conjugation | Unconjugated |
| Tested Applications | ELISA, FC, WB |
| Immunogen | E.coli-derived human MMACHC recombinant protein (Position: M1-K242). |
| Form/Appearance | Lyophilized |
| Concentration | Adding 0.2 ml of distilled water will yield a concentration of 500 µg/ml. |
| Storage | At -20°C for one year from date of receipt. After reconstitution, at 4°C for one month. It can also be aliquotted and stored frozen at -20°C for six months. Avoid repeated freezing and thawing. |
| Note | For research use only |
| Application notes | Western blot, 0.25-0.5 µg/ml, Human Flow Cytometry (Fixed), 1-3 µg/1x10 ⁶ cells, Human ELISA, 0.1-0.5 µg/ml, Human. Tested Species: In-house tested species with positive results. Other applications have not been tested. Optimal dilutions should be determined by end users. Adding 0.2 ml of distilled water will yield a concentration of 500 µg/ml |
| Clonality | Polyclonal |
| MW | 32 kDa |
| Uniprot ID | Q9Y4U1 |
| Expiration Date | 12 months from date of receipt. |



Flow Cytometry analysis of JK cells usin...



WB analysis of MMACHC using anti-MMACHC ...