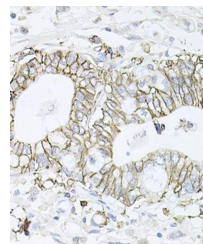


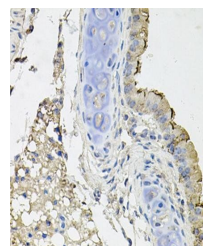
Product Datasheet

ATP1B1 antibody (orb178604)

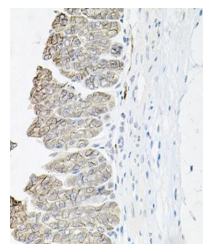
| | |
|----------------------------|--|
| Description | Rabbit polyclonal antibody to ATP1B1 |
| Reactivity | Human, Mouse |
| Conjugation | Unconjugated |
| Tested Applications | IHC, WB |
| Immunogen | Recombinant fusion protein of human ATP1B1(NP_001668.1). |
| Preservatives | PBS with 0.02% sodium azide,50% glycerol,pH7.3. |
| Concentration | 1 mg/ml |
| Storage | Store at -20°C. Avoid freeze / thaw cycles. |
| Note | For research use only |
| Isotype | IgG |
| Clonality | Polyclonal |
| MW | 55kDa |
| Uniprot ID | P05026 |
| Dilution Range | WB: 1:500-2000, IHC-P: 1:50-200 |
| Expiration Date | 12 months from date of receipt. |



Immunohistochemical staining of human stomach tissue.



Immunohistochemical staining of human gastric tissue.



Immunohistochemical staining of mouse lung tissue.