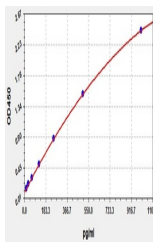


Product Datasheet

Canine IL-22(Interleukin 22) ELISA Kit (orb1784718)

Description	Canine IL-22(Interleukin 22) ELISA Kit
Reactivity	Canine
Range	15.625-1000pg/ml
Target	IL-2
Storage	2-8 °C for 6 months
Note	For research use only
Sensitivity	9.375pg/ml
Expiration Date	Please enquire.



Canine IL-22(Interleukin 22) ELISA Kit