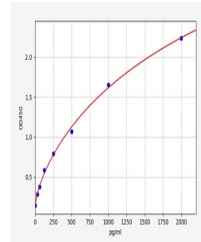


Product Datasheet

Canine CXCL10(Interferon Gamma Induced Protein 10kDa) ELISA Kit (orb1784715)

Description	Canine CXCL10(Interferon Gamma Induced Protein 10kDa) ELISA Kit
Reactivity	Canine
Range	31.25-2000pg/ml
Target	CXCL10
Storage	2-8 °C for 6 months
Note	For research use only
Uniprot ID	Q5KSV9
Sensitivity	18.75pg/ml
Expiration Date	Please enquire.



Canine
CXCL10(Interferon
Gamma Induced
P...