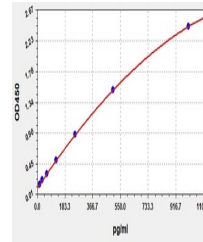


Product Datasheet

Human CHAC1(Glutathione-specific gamma-glutamylcyclotransferase 1)ELISA kit (orb1784692)

Description	Human CHAC1(Glutathione-specific gamma-glutamylcyclotransferase 1)ELISA kit
Reactivity	Human
Range	15.625-1000pg/ml
Target	CHAC1
Storage	2-8 °C for 6 months
Note	For research use only
Uniprot ID	Q9BUX1
Sensitivity	9.375pg/ml
Expiration Date	Please enquire.



Human
CHAC1(Glutathione-specific gamma-g...