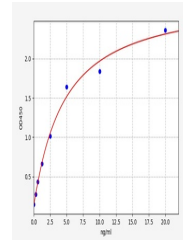


Product Datasheet

Mouse p-tau231(Phospho Tau 231) ELISA Kit (orb1784659)

Description	Mouse p-tau231(Phospho Tau 231) ELISA Kit
Reactivity	Mouse
Range	7.813-500pg/ml
Target	p-tau231
Storage	2-8 °C for 6 months
Note	For research use only
Sample Types	Serum, Plasma, Cell Culture Supernatant, Cell or tissue lysate, Other liquid samples
Uniprot ID	P10637
Sensitivity	4.688pg/ml
Expiration Date	Please enquire.



Mouse p-tau231(Phospho Tau 231) ELISA Kit...