

Product Datasheet

Rabbit anti-GFP Recombinant Monoclonal Antibody (orb1784590)

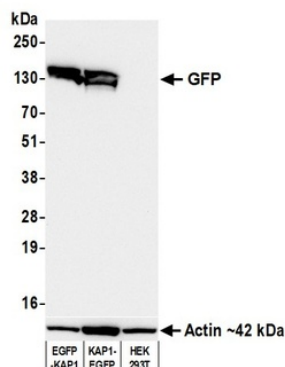
Description	Rabbit anti-GFP Recombinant Monoclonal Antibody
Species/Host	Rabbit
Conjugation	Unconjugated
Tested Applications	ICC, IP, WB
Immunogen	Green Fluorescent Protein
Target	GFP
Preservatives	Borate Buffered Saline (BBS) pH 8.2 with 0.1% rAlbumin and 0.09% Sodium Azide
Form/Appearance	Whole IgG
Concentration	50 µg/ml
Storage	Maintain refrigerated at 2-8°C for up to 2 weeks. For long term storage store at -20°C in small aliquots to prevent freeze-thaw cycles.
Note	For research use only
Application notes	Format: Whole IgG
Clonality	Recombinant
Clone Number	BLRE04L
Dilution Range	WB: 1:1000, IP: 20 µl/mg lysate, ICC: 1:100 to 1:500. Epitope retrieval with citrate buffer pH 6.0 is recommended for FFPE cell sections
Expiration Date	12 months from date of receipt.

Biorbyt Ltd.

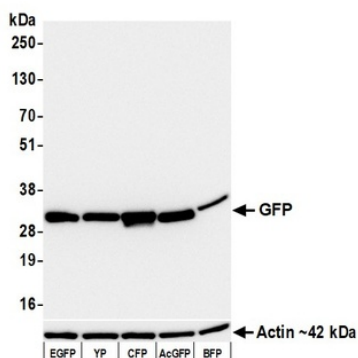
7 Signet Court, Swann's Road,
Cambridge, CB5 8LA, United Kingdom
Email: info@biorbyt.com, support@biorbyt.com
Phone: [+44 \(0\) 1223 859-353](tel:+44(0)1223859353) | Fax: [+1 \(415\) 651-8558](tel:+1(415)6518558)

Biorbyt LLC.

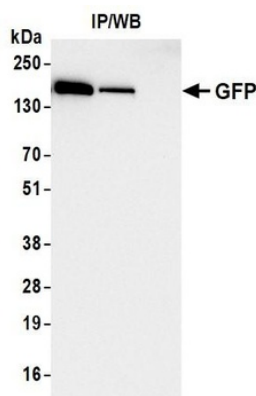
68 TW Alexander Drive,
Durham, NC, 27713, United States
Email: info@biorbyt.com, support@biorbyt.com
Phone: [+1 \(415\) 906-5211](tel:+1(415)9065211) | Fax: [+1 \(415\) 651-8558](tel:+1(415)6518558)



Detection of GFP by western blot. Samples: Whole cell lysate from HEK293T cells transfected with EGFP-KAP1, KAP1-EGFP, or untransfected. Antibody: Rabbit anti-GFP recombinant monoclonal antibody used at 1:1000.



Detection of GFP by western blot. Samples: Whole cell lysate from 293T cells transfected with EGFP, YP, CFP, AcGFP, or BFP. Antibody: Rabbit anti-GFP recombinant monoclonal antibody used at 1:1000.



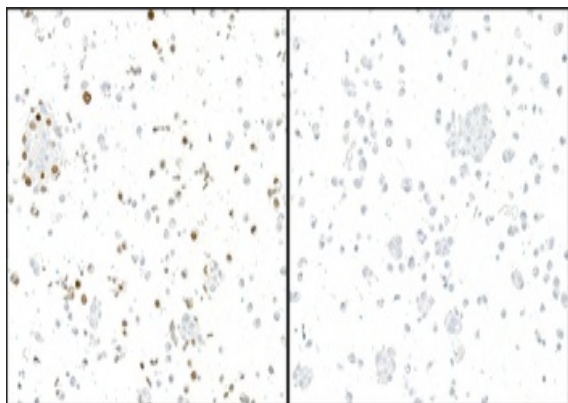
Detection of GFP by western blot of immunoprecipitates. Samples: Whole cell lysate from 293-F cells transfected with EGFP-KAP1. Antibodies: Rabbit anti-GFP recombinant monoclonal antibody.

Biorbyt Ltd.

7 Signet Court, Swann's Road,
Cambridge, CB5 8LA, United Kingdom
Email: info@biorbyt.com, support@biorbyt.com
Phone: [+44 \(0\) 1223 859-353](tel:+44(0)1223859353) | Fax: [+1 \(415\) 651-8558](tel:+1(415)6518558)

Biorbyt LLC.

68 TW Alexander Drive,
Durham, NC, 27713, United States
Email: info@biorbyt.com, support@biorbyt.com
Phone: [+1 \(415\) 906-5211](tel:+1(415)9065211) | Fax: [+1 \(415\) 651-8558](tel:+1(415)6518558)



Detection of GFP by ICC. Sample: FFPE section of HEK293 cells expressing a GFP nuclear protein (left) and untransfected HEK293 cells (right). Antibody: Rabbit anti-GFP recombinant monoclonal antibody.

Biorbyt Ltd.

7 Signet Court, Swann's Road,
Cambridge, CB5 8LA, United Kingdom
Email: info@biorbyt.com, support@biorbyt.com
Phone: [+44 \(0\) 1223 859-353](tel:+44(0)1223859353) | Fax: [+1 \(415\) 651-8558](tel:+1(415)6518558)

Biorbyt LLC.

68 TW Alexander Drive,
Durham, NC, 27713, United States
Email: info@biorbyt.com, support@biorbyt.com
Phone: [+1 \(415\) 906-5211](tel:+1(415)9065211) | Fax: [+1 \(415\) 651-8558](tel:+1(415)6518558)