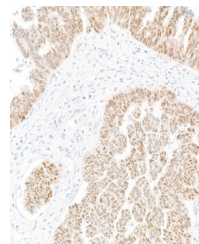


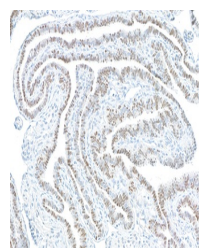
Product Datasheet

PAX8 Antibody (orb1784589)

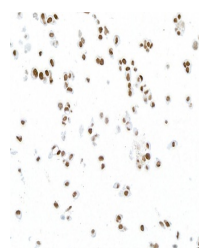
Description	PAX8 Antibody
Species/Host	Mouse
Reactivity	Human
Conjugation	Unconjugated
Tested Applications	ICC, IHC, WB
Immunogen	Human PAX8
Target	PAX8
Preservatives	Phosphate Buffered Saline (PBS) with 0.1% rAlbumin and 0.09% Sodium Azide
Form/Appearance	Whole IgG
Concentration	50 µg/ml
Storage	Shelf life: 1 year from date of receipt. Storage: 2 - 8°C
Note	For research use only
Application notes	Format: Whole IgG
Clonality	Monoclonal
Uniprot ID	Q06710
Dilution Range	WB: 1:1000, IHC: 1:100 to 1:500. Epitope retrieval, using pressure cooker with citrate buffer pH 6.0 is recommended for FFPE tissue sections, ICC: 1:100 to 1:500. Epitope retrieval using pressure cooker with citrate buffer pH 6.0 is recommended for FFPE cell sections
Expiration Date	12 months from date of receipt.



Detection of human PAX8 by immunohistochem...



Detection of human PAX8 by immunohistochem...



Detection of human PAX8 by immunocytoche...